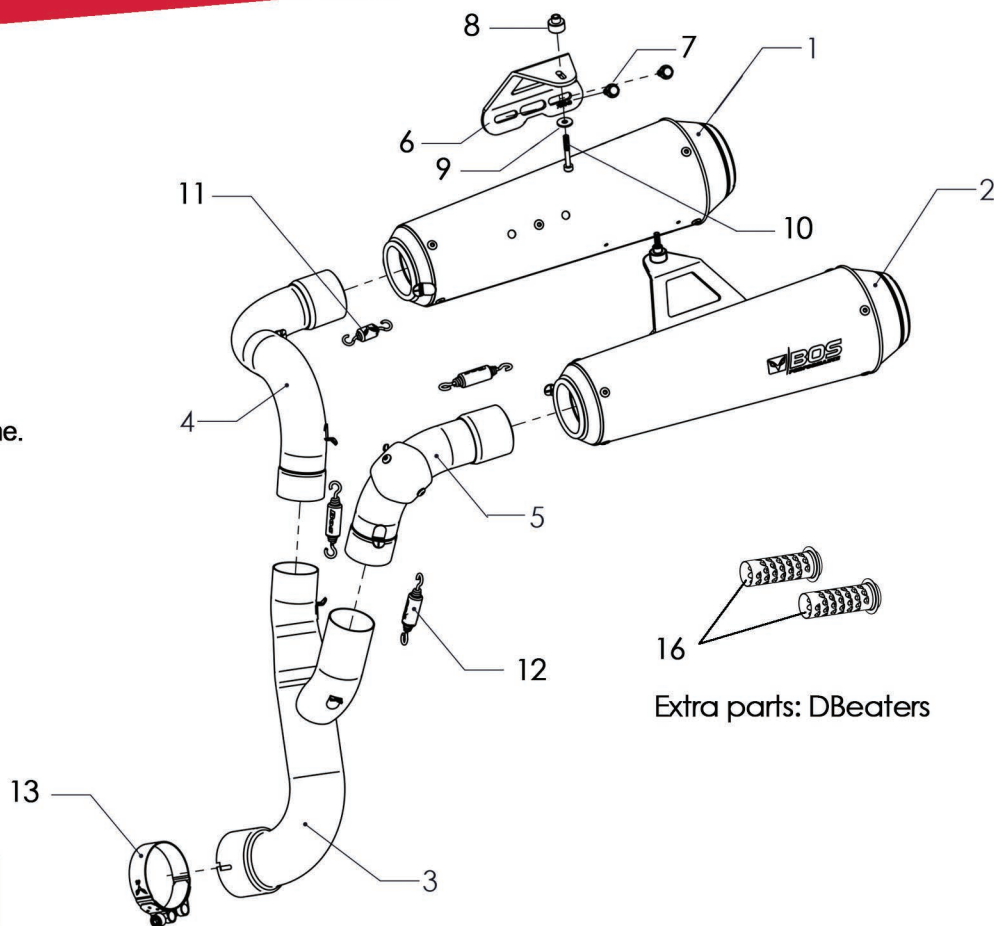
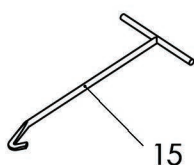


Suitable for:

- BMW R nine T
- BMW R nine T - Pure
- BMW R nine T - Urban G/T
- BMW R nine T - Racer
- BMW R nine T - Scrambler

Silencer attached to main frame with dismantled pillion passenger frame.



Extra parts: DBEaters

Approval Number



Pos	Qty	Part No.	Description	Ordernumber
1	1	900083	Muffl. SSEC GT Type 1022 Carbon steel	<b>BM09R07-SECS - Carbon Steel</b>
2	1	900087	Muffl. SSEC GT Type 1022 Carbon Steel	<b>BM09R07-SEST - Stainless Steel</b>
1*	1	900098	Muffl. SSEC GT Type 1022 Stainless Steel	
2*	1	900099	Muffl. SSEC GT Type 1022 Stainless Steel	
		<b>850028</b>	<b>Mounting Parts:</b>	
3	1	750024 #1	Link Pipe #1	
4	1	750024 #2	Link Pipe #2	
5	1	750024 #3	Link Pipe #3	
6	2	700040	Mounting Bracket	
7	4	14148	M6x12 Torx Flange Screw	
8	2	300035	Spacer	
9	2	300039	M5 Washer large	
10	2	300038	Bolt M5x35	
11	1	300032	Pull Spring 25 mm.	
12	3	14088	Pull Spring 36 mm.	
13	1	300014	Clamp 67	
14	1	100030	Sound Approval Card	
15	1	300040	Spring Pulling Tool	
<b>Weight:</b>				
			Stock:	4,6 kg (Scrambler)
			Bos:	5,0 kg
<b>Noiselevel: @ 3875 rpm</b>				
			Stock:	Specified 98,0 dB(A)
				Measured 97,4 dB(A)
			Bos:	Measured 98,6 dB(A)
<b>Performance</b>				
			Stock:	115,8 Hp / 7255 rpm
			Bos:	120,2 Hp / 7250 rpm
			Max. Hp incr.:	+ 4,4 Hp / 7250 rpm
			Max Nm incr.:	+ 4,3 Nm / 7269 rpm
<b>Tips</b>				
In order to avoid smudges and fingerprints burning into the surface it is imperative to clean the exhaust before starting the engine, burnt in stains are very difficult to remove.				
After 300 miles or 500 kms. check all nuts and bolts and retighten if necessary.				
<b>Extra Parts:</b>				
16	2	650118	DBeater SSEC-GT D38	